

REV'IT! Avertum Street Tech-Air®



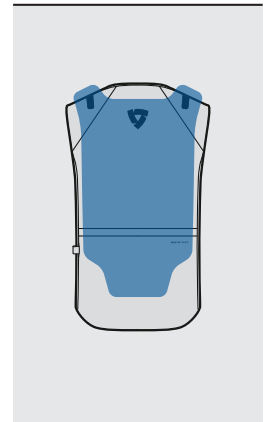
01. WHAT IT PROTECTS



This device is designed to worn over or under a CE Compliant motorcycle jacket to offer additional dynamic impact protection. A passive SEESOFT Central Back Protector can be added for enhanced protection.

It is certified Class C O(Over) and C U(Under) according to the EN 17092-6:2020. Class C garments offer minimum abrasion and impact protection only for the areas covered.

- Chest Area
- Full Back



02. HOW IT WORKS



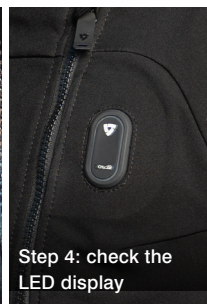
Step 1: connect and charge battery



Step 2: Attach magnetic (red) button of bladder



Step 3: position the magnetic activation patch correctly and close main zipper



Step 4: check the LED display



Step 5: wear over a motorcycle jacket

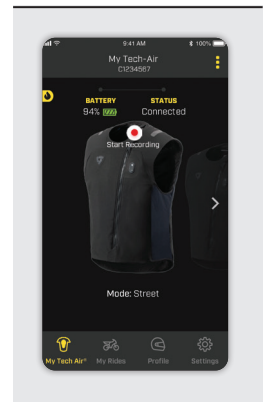
03. APP



Download the app, register, scan the QR code, pair the device through bluetooth

The app allows you to:

- Customer self-registration of the product
- Live info on system status, battery level, hours of use, deployment
- "MyRide" function. Records top stats of each journey, with social media share options
- Direct feedback possibility
- Free system updates available through the app



04. HOW TO SERVICE*



SYSTEM INSPECTION

Every 2 years or 500h of use (Check Tech-Air® app)

- The base layer is washed
- Electronic unit check
- Firmware upgrade (If applicable)
- Airbag tested for integrity
- Reassembly of the system and functionalities check

INFLATORS REPLACEMENT

Applicable on the first five deployments

- Electronic unit check
- Firmware upgrade (If applicable)
- Airbag tested for integrity
- Inflator replacement
- Reassembly of the system and functionalities check

FULL SERVICE

At the sixth deployment

- Base layer cleaning
- Electronic unit check
- Firmware upgrade (If applicable)
- Airbag replacement
- Inflator replacement
- Reassembly of the system and functionalities check

* - Applied service depends on the results of the inspection done by the Service Center

- Service can only be performed by the REV'IT! HQ in Oss, The Netherlands and Sales Office in Denver, Colorado, USA

REV'IT! Avertum Street Tech-Air®



05. HOW TO SELF-SERVICE



Important:

Consult the manual included with the "INFLATOR REPLACEMENT KIT" for replacement instructions. This manual is leading.

!!Always use the adapter valve that came with your device in order to test the integrity of the bladder!!

!!Always use a calibrated manometer to determine the correct pressure!!



06. SUMMARY

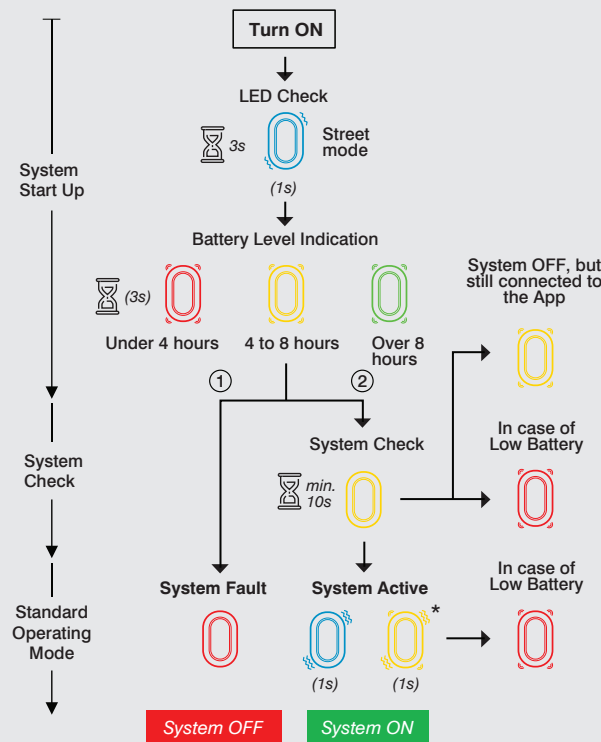


- At urban speed, REV'IT! Avertum StreetTech-Air® protects the rider before the body collision against the obstacle
- REV'IT! Avertum Street Tech-Air® protects in case of loss of control crashes (high-sides/low-sides)
- REV'IT! Avertum Street Tech-Air® protects when the bike is stationary (called street mode)
- Device is "true to size", example Size L jacket, Size L airbag (Always consult the size chart for exact measurements)
- Impact force reduction of 95% in the protecting areas covered
- Independent system; no gps nor connection to bike, needed

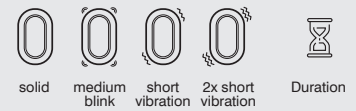
Incident Type			Street Mode
Crashes	Crashes against Obstacles or Vehicle		✓
	Stationary Crashes		✓
Loss Of Control	Low-Side Crashes		✓
	High-Side Crashes		✓

Table 1: Summary of the Envelope of Protection for Street Mode.

LED Indications



Glossary



LED Indications During Battery Recharge



IMPORTANT! The solid blue LED light indicates that the System is ON.

① System Fault: Operating Mode that verifies in case of "Empty Gas Canister or"System Error" (see section 18, "Troubleshooting")

② System Active: Mode that verifies in case the System Check is successfully passed

* The System has reached the maximum number of Inflations guaranteed for the System

06. DISCLAIMER



Before use always consult the information provided in the Avertum Street Tech-Air® Manual.